

## Set-up of the Elana Training Device

(reference "INFORMATION FOR SURGEONS", chapter 9.2 and Instructions For Use, Training Device)

090626

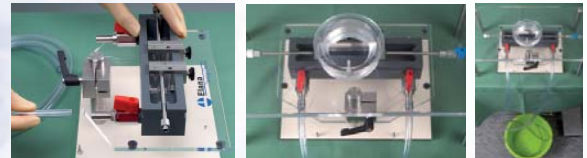
Elana bv recommends the Elana Training Device for exercising deep micro vascular surgical techniques and practicing the ELANA surgical procedure.



### STEP 1: Preparing the model

- 1) Connect a flexible drain tube onto the regulation valve located on the backside of the working cavity.

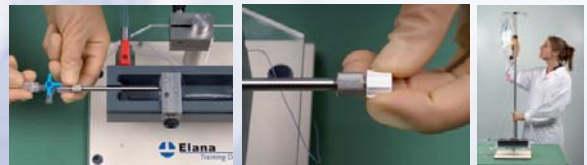
#### Step 1



### STEP 2: Preparing the flow system

- 1) Connect an infusion system to the liquid feed pipe using an extension tube with a Luer Lock connector.
- 2) Set water pressure to about 100 mmHg. The supply should be about 1.35m (3.5ft) above the model.

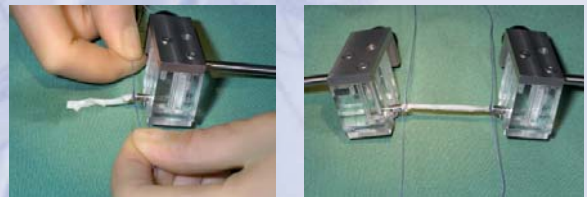
#### Step 2



### STEP 3: Connecting the vessel

- 1) Remove the sliding connectors from the working cavity.
- 2) Slide the vessel over both vessel connectors. Tie a Vicryl 3-0 behind the ball, to fixate the vessel.
- 3) Place the sliding connectors back into the working cavity, fixing their position by tightening the screws.

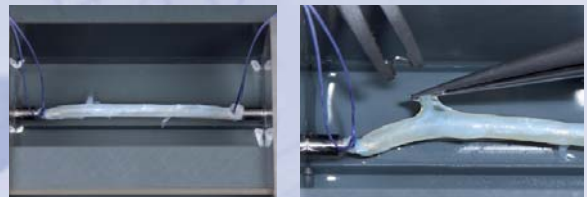
#### Step 3



### STEP 4: Pressurizing the vessels

- 1) Open the luer lock and let the liquid flow through the vessel.
- 2) Identify leaks. Occlude them with hemoclips or sutures.

#### Step 4



### STEP 5: Working cavity

- 1) Place the translucent table on top of the training device. Trainees can work through a small hole. Position the working cavity to practice a superficial or deep operation area.

#### Step 5



### STEP 6: Cleaning up

- 1) Clean the device after training.
- 2) Flush the device with tap water especially if saline or other liquids were used.

#### Contact

Elana bv, Yalelaan 44, 3584 CM Utrecht, The Netherlands. T. +31 30 253 72 76, F. +31 30 253 72 65.  
 Elana inc, 10480 Little Patuxent Parkway, Suite 400, Columbia, MD 21044, USA. T. +1 410 531 5699,  
 F. +1 410 531 5698. Email: info@elana.com, Internet: www.elana.com

Elana is not responsible for injury or damage resulting from improper use of the Elana Training Device. If there is any doubt concerning the use of the Elana Training Device or the Instructions For Use, contact Elana immediately for assistance.